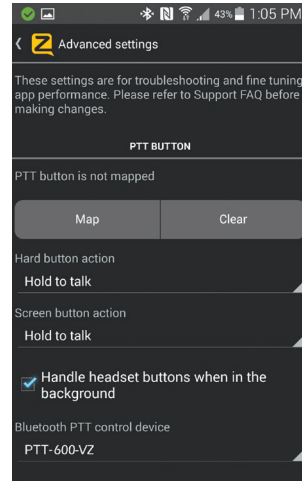


App Setup (ZELLO)

To get the Zello app on your phone, install Zello from your Zello@Work network, or download the app from the Google Play store or Apple App Store

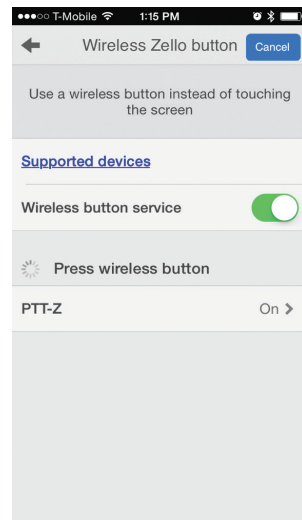
Setting up Zello (Android)

1. Make sure that your phone's Bluetooth radio is enabled, and that the speaker microphone is powered on and that the microphone and phone are connected to each other.
2. Open Zello and go to Menu > Options > Under the Hood.
3. Under "Bluetooth PTT Control," choose "PTT-600". You should see a popup indicating the device control has been activated. If you don't see it, you may need to power cycle the speaker microphone and repeat this step.
4. Open the Talk screen in Zello (the screen with a big round button). In the bottom-left corner of the screen, tap-hold and slide to the Bluetooth icon to activate the speaker microphone in Zello.



Setting up Zello (iOS)

1. Make sure that your phone's Bluetooth radio is enabled, and that the speaker microphone is powered on and that the microphone and phone are connected to each other.
2. Open Zello and go to: Settings > PTT Button > Wireless Zello Button.
3. Make sure that the "Wireless Button Service" is turned on by sliding the button to the right.
4. Press and hold the PTT button on the AMPS-BLUE-ZU.
5. Select "PTT-Z" from the list of PTT devices shown on the screen.
6. Open the Talk screen in Zello (the screen with a big round button). Pressing the PTT button the Push-to-Talk device should now cause Zello to transmit.



A

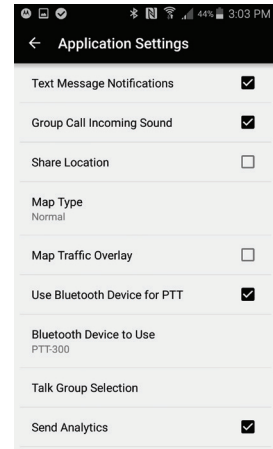
App Setup (Wave Communicator)

To get the WAVE Communicator app on your phone, download the app from the Google Play store or Apple App Store.

For Android phones the PTT function of the AMPS-BLUE-ZU can be enabled to work with the Wave Communicator app in one of two different ways, either using Serial Port Protocol (SPP) over conventional Bluetooth or using a special version of Bluetooth called Bluetooth Low Energy (BLE). The BLE option can only be used with handsets that have hardware support for BLE and are using Android version 5.0 (Lollipop) or newer. Choose the option that is right for your phone and follow the instructions below:

Setting up WAVE Communicator (Android-SPP)

1. Make sure that your phone's Bluetooth radio is enabled, and that the speaker microphone is powered on and that the microphone and phone are connected (paired) to each other.
2. Open WAVE Communicator and log in using your username and password.
3. Tap on the More Options symbol "⋮" in the top right hand corner of the app and then tap "App Settings."
4. Make sure that "Use Bluetooth Device for PTT" is selected. If it isn't, tap it to select it.
5. Tap on "Bluetooth Device to Use" and then select "PTT-600" from the list.
6. The app will then prompt you to press the PTT button on the AMPS-BLUE-ZU to confirm that the setup was successful.



Setting up WAVE Communicator (optional, Android - Bluetooth Low Energy)

1. Make sure that your phone's Bluetooth radio is enabled, and that the speaker microphone is powered on and that the microphone and phone are connected (paired) to each other.
2. Press and hold the PTT button on the AMPS-BLUE-ZU speaker microphone.
3. On your phone, go to Settings > Bluetooth. Select "Search for Devices" from the phone's Bluetooth menu. The phone will scan for nearby Bluetooth devices and a list showing the names of nearby Bluetooth devices will be shown on the screen.
4. Choose "PTT-Z" from the list.
5. Keep the phone and speaker mic near each other and wait a few seconds. The devices will pair to each other.
6. Open WAVE Communicator and log in using your username and password.
7. Tap on the More Options symbol "⋮" in the top right hand corner of the app and then tap "App Settings."
8. Make sure that "Use Bluetooth Device for PTT" is selected. If it isn't, tap it to select it.
9. Tap on "Bluetooth Device to Use" and then select "PTT-Z" from the list.
10. Release the PTT button on the AMPS-BLUE-ZU.

Setting up WAVE Communicator (iOS)

1. Make sure that your phone's Bluetooth radio is enabled, and that the speaker microphone is powered on and that the microphone and phone are connected (paired) to each other.
2. Open WAVE Communicator and log in using your username and password.
3. Tap on the More Options symbol "⋮" in the top right hand corner of the app and then tap "App Settings."
4. Press and hold the PTT button on the AMPS-BLUE-ZU speaker microphone.
4. Make sure that "Use Bluetooth Device for PTT" is selected. If it isn't, tap it to select it.
5. Tap on "Bluetooth Device to Use" and then select "PTT-Z" from the list.
6. Release the PTT button on the AMPS-BLUE-ZU.

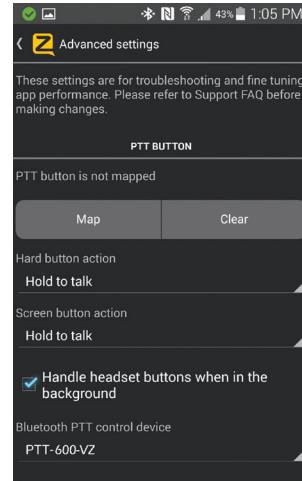
B

App Setup (ZELLO)

To get the Zello app on your phone, install Zello from your Zello@Work network, or download the app from the Google Play store or Apple App Store

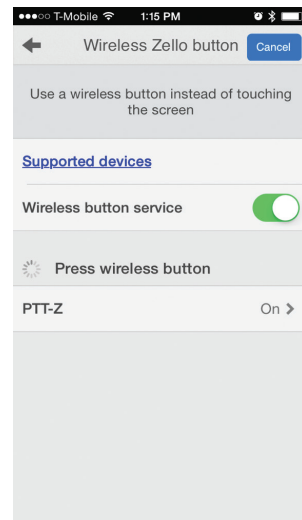
Setting up Zello (Android)

1. Make sure that your phone's Bluetooth radio is enabled, and that the speaker microphone is powered on and that the microphone and phone are connected to each other.
2. Open Zello and go to Menu > Options > Under the Hood.
3. Under "Bluetooth PTT Control," choose "PTT-600". You should see a popup indicating the device control has been activated. If you don't see it, you may need to power cycle the speaker microphone and repeat this step.
4. Open the Talk screen in Zello (the screen with a big round button). In the bottom-left corner of the screen, tap-hold and slide to the Bluetooth icon to activate the speaker microphone in Zello.



Setting up Zello (iOS)

1. Make sure that your phone's Bluetooth radio is enabled, and that the speaker microphone is powered on and that the microphone and phone are connected to each other.
2. Open Zello and go to: Settings > PTT Button > Wireless Zello Button.
3. Make sure that the "Wireless Button Service" is turned on by sliding the button to the right.
4. Press and hold the PTT button on the AMPS-BLUE-ZU.
5. Select "PTT-Z" from the list of PTT devices shown on the screen.
6. Open the Talk screen in Zello (the screen with a big round button). Pressing the PTT button the Push-to-Talk device should now cause Zello to transmit.



A

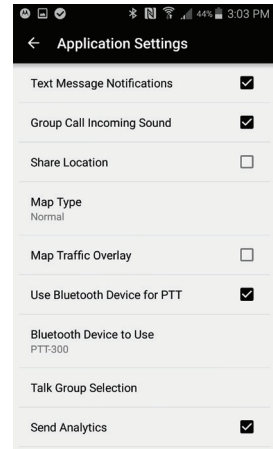
App Setup (Wave Communicator)

To get the WAVE Communicator app on your phone, download the app from the Google Play store or Apple App Store.

For Android phones the PTT function of the AMPS-BLUE-ZU can be enabled to work with the Wave Communicator app in one of two different ways, either using Serial Port Protocol (SPP) over conventional Bluetooth or using a special version of Bluetooth called Bluetooth Low Energy (BLE). The BLE option can only be used with handsets that have hardware support for BLE and are using Android version 5.0 (Lollipop) or newer. Choose the option that is right for your phone and follow the instructions below:

Setting up WAVE Communicator (Android-SPP)

1. Make sure that your phone's Bluetooth radio is enabled, and that the speaker microphone is powered on and that the microphone and phone are connected (paired) to each other.
2. Open WAVE Communicator and log in using your username and password.
3. Tap on the More Options symbol "⋮" in the top right hand corner of the app and then tap "App Settings."
4. Make sure that "Use Bluetooth Device for PTT" is selected. If it isn't, tap it to select it.
5. Tap on "Bluetooth Device to Use" and then select "PTT-600" from the list.
6. The app will then prompt you to press the PTT button on the AMPS-BLUE-ZU to confirm that the setup was successful.



Setting up WAVE Communicator (optional, Android - Bluetooth Low Energy)

1. Make sure that your phone's Bluetooth radio is enabled, and that the speaker microphone is powered on and that the microphone and phone are connected (paired) to each other.
2. Press and hold the PTT button on the AMPS-BLUE-ZU speaker microphone.
3. On your phone, go to Settings > Bluetooth. Select "Search for Devices" from the phone's Bluetooth menu. The phone will scan for nearby Bluetooth devices and a list showing the names of nearby Bluetooth devices will be shown on the screen.
4. Choose "PTT-Z" from the list.
5. Keep the phone and speaker mic near each other and wait a few seconds. The devices will pair to each other.
6. Open WAVE Communicator and log in using your username and password.
7. Tap on the More Options symbol "⋮" in the top right hand corner of the app and then tap "App Settings."
8. Make sure that "Use Bluetooth Device for PTT" is selected. If it isn't, tap it to select it.
9. Tap on "Bluetooth Device to Use" and then select "PTT-Z" from the list.
10. Release the PTT button on the AMPS-BLUE-ZU.

Setting up WAVE Communicator (iOS)

1. Make sure that your phone's Bluetooth radio is enabled, and that the speaker microphone is powered on and that the microphone and phone are connected (paired) to each other.
2. Open WAVE Communicator and log in using your username and password.
3. Tap on the More Options symbol "⋮" in the top right hand corner of the app and then tap "App Settings."
4. Press and hold the PTT button on the AMPS-BLUE-ZU speaker microphone.
4. Make sure that "Use Bluetooth Device for PTT" is selected. If it isn't, tap it to select it.
5. Tap on "Bluetooth Device to Use" and then select "PTT-Z" from the list.
6. Release the PTT button on the AMPS-BLUE-ZU.

B