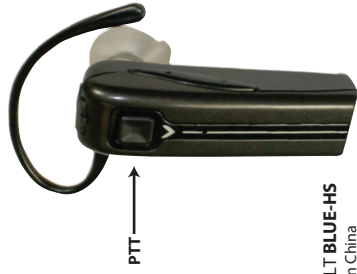




COBALT BLUE-HS Bluetooth Headset with PTT capability

The COBALT BLUE-HS is a wireless Bluetooth headset with Push-to-Talk capability, for use with COBALT AV two-way radio adapters.



COBALT BLUE-HS
Made in China

COBALT AV and BLUE-HS are trademarks owned by Comtronics, Lexington KY. All other product or service names are the property of their respective owners © 2014 Comtronics | Cobalt AV. All Rights Reserved

Federal Communication Commission Interference Statement

This equipment has been tested and found to comply with the limits for a Class B digital device, pursuant to Part 15 of the FCC Rules. These limits are designed to provide reasonable protection against harmful interference in a residential installation. This equipment generates uses and can radiate radio frequency energy and, if not installed and used in accordance with the instructions, may cause harmful interference to radio communications. However, there is no guarantee that interference will not occur in a particular installation. If this equipment does cause harmful interference to radio or television reception, which can be determined by turning the equipment off and on, the user is encouraged to try to correct the interference by one of the following measures:

- Reorient or relocate the receiving antenna.
- Increase the separation between the equipment and receiver.
- Connect the equipment into an outlet on a circuit different from that to which the receiver is connected.
- Consult the dealer or an experienced radio/TV technician for help.

FCC Caution: Any changes or modifications not expressly approved by the party responsible for compliance could void the user's authority to operate this equipment.

This device complies with Part 15 of the FCC Rules. Operation is subject to the following two conditions: (1) This device may not cause harmful interference, and (2) this device must accept any interference received, including interference that may cause undesired operation.

This equipment complies with FCC RF radiation exposure limits set forth for an uncontrolled environment. To maintain compliance with FCC RF exposure compliance requirements, please avoid direct contact to the transmitting antenna during transmitting.

RF Exposure Warning!

Please keep product 20cm away from your body or bystander during the radio operation. The typical handheld two-way radios were certified under mobile usage condition (i.e. keep 20cm away from the user body) and use of such radio closer than 20cm may exceed the US RF exposure limit and shall be avoided.

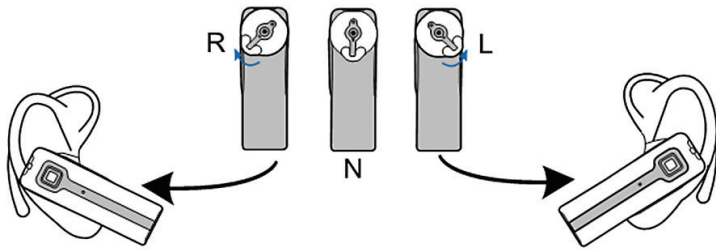


2350 Fortune Drive, Lexington KY 40509
PH: 859.299.9494 FAX: 859.299.9334
TOLL FREE: 1.800.264.6021
WWW.COBALTAUDIO.COM

Version 1.0 May 2014

ADJUSTING THE FIT OF THE BLUETOOTH HEADSET

You can adjust the fit of the COBALT BLUE-HS headset to provide the best sound clarity and comfort. The headset comes with two different sized soft gel ear tips (large and small), and an optional ear hook. You can choose which size ear tip to use, whether or not to use the ear hook, and which ear you prefer to wear the headset on.

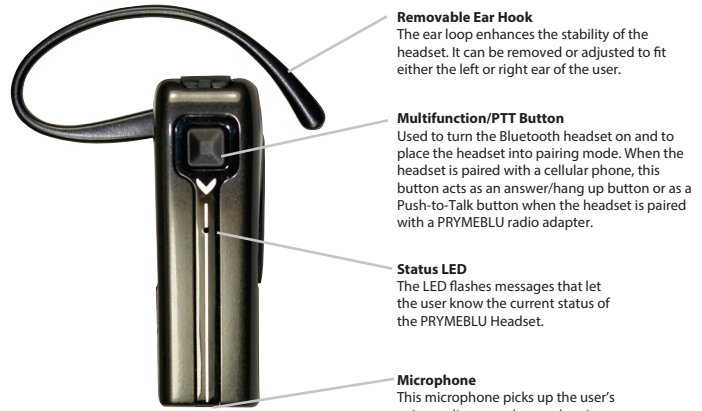


The headset comes with the large-sized soft gel ear bud installed but you can replace it with the optional small ear bud. To change the ear bud:

1. Turn the ear tip to position N as shown in the diagram. When in this position, the ear bud can be removed by pulling it out and away from the headset.
2. Choose which size ear bud you wish to use. Hold the ear bud in position N and then affix it on the headset. Then, turn it to position R or L to lock it to the headset.
3. When using the headset, keep the ear bud in position R or L to prevent the ear bud from coming detached.

The ear loop enhances the stability of the headphone. It was installed on the headphone. If you would like to switch it to the other ear, then you can remove it from the headset by first removing the ear bud. Once removed, you can turn it over to the other side, and re-install it on the headset.

Controls and Connection



- Removable Ear Hook**
The ear loop enhances the stability of the headset. It can be removed or adjusted to fit either the left or right ear of the user.
- Multifunction/PTT Button**
Used to turn the Bluetooth headset on and to place the headset into pairing mode. When the headset is paired with a cellular phone, this button acts as an answer/hang up button or as a Push-to-Talk button when the headset is paired with a PRYMEBLU radio adapter.
- Status LED**
The LED flashes messages that let the user know the current status of the PRYMEBLU Headset.
- Microphone**
This microphone picks up the user's voice audio to send over-the-air.



- Charge Port**
This micro-USB jack is used to connect the wall charger to the headset. (wall charger not included)
- Soft Gel Ear Bud Earphone**
Received calls are heard through the headset's earphone. The Gel Ear Bud helps the headset fit the user's ear for best security and sound clarity.
- Volume Up / Down Buttons**
These buttons can be used to set the volume level of the headset.

CHARGING THE BLUETOOTH HEADSET

The COBALT BLUE-HS Bluetooth Headset has an internal Lithium Ion rechargeable battery pack which must be charged prior to operation and must be recharged regularly. A fully charged battery will provide approximately 4 to 12 hours (or more) of operation before needing to be recharged. However, operating time can vary depending on usage and the condition of the battery pack. Recharge the battery regularly.

USB charger sold separately.
Part number P-CHA-BT-USB



To charge the COBALT BLUE-HS Bluetooth Headset:

1. Ensure the Headset is turned off. To turn the headset off hold the Multifunction Button + the Volume Down button for three to four seconds.
2. Plug the supplied charge cable into the charge jack on the COBALT BLUE-HS Bluetooth Headset. You will need to remove the protective rubber cover that is inserted into the charge jack of the headset. (To prevent dust and moisture from damaging your headset, always ensure this cover is in place when you are not charging the BLUE-HS.)
3. Plug the other end of the charge cable into a powered USB connector, such as a USB 2.0 port on a PC or a USB charger. (USB charger sold separately. Part number P-CHA-BT-USB)
4. Once the charging process has begun, the LED indicator on the headset will show a constant red light. When the battery is done charging, the LED light will shut off.
5. Typical charge time is approximately two hours. Actual charge time will vary depending on several factors including the battery's charge state, condition, and age.
6. Disconnect headset from the USB power source when charging is completed.

Charging Cautions:

- Do not use a charge cable or wall charger that appears to be damaged. (Example: frayed wires, melted plastic, etc.)
- Do not tamper with or modify the COBALT BLUE-HS headset, charge cable, or charger.
- Always turn COBALT BLUE-HS Bluetooth Headset off when charging.

PAIRING THE HEADSET WITH A COBALT RADIO ADAPTER AND 2-WAY RADIO



STEP ONE: When pairing the COBALT **BLUE-HS** Bluetooth Headset with a COBALT Radio Adapter, make sure that the headset, two-way radio, and COBALT adapter are all powered off to start. To turn the headset off hold the Multifunction Button + the Volume Down button for three to four seconds.

STEP TWO: Place the COBALT Radio adapter into pairing mode. The steps needed to do this depend on which model COBALT adapter you are using and on what source the adapter gets power from. For example:

If your COBALT Radio Adapter gets power directly from the two-way radio it is attached to, hold down the Talk button on the COBALT Radio Adapter while turning the two-way radio ON.

If your COBALT Radio Adapter has its own charger/internal battery pack, turn the power switch on the COBALT Radio Adapter to the ON position while holding down the multifunction Talk button on the COBALT Radio Adapter.

If your COBALT Radio Adapter gets power from an external source (such as an automobile cigarette lighter jack), hold down the Talk button on the COBALT Radio Adapter while plugging the adapter into the external power source (cigarette lighter jack).

Continue to hold the Talk button on the adapter down for approximately three seconds. Release the Talk button when the status LED on the COBALT Radio Adapter begins to flash two times per second. The COBALT Radio Adapter is now in audio accessory pairing mode.

STEP THREE: Place the COBALT **BLUE-HS** Bluetooth headset into pairing mode. To do this, hold down the Multifunction Button on the headset for three to four seconds. Continue to hold the button down until you see the LED Indicator on the headset begin to quickly flash RED-BLUE-RED-BLUE in sequence. The COBALT **BLUE-HS** Bluetooth headset is now in pairing mode.

STEP FOUR: *Wait...* After a few seconds, the two devices should pair with one another. Once the COBALT **BLUE-HS** Bluetooth Headset and Radio Adapter are paired with each other, the status LED on the adapter will show a constant blue light for three seconds. The LED on the headset will then show three blue flashes every two seconds.

If the COBALT Radio Adapter does not detect the headset within 60 seconds of being put into pairing mode, the adapter will exit the pairing mode and resume normal operation.

5

USING THE COBALT BLUE-HS BLUETOOTH HEADSET

To power the headset on, press and hold the Multifunction button on the side of the headset for two seconds.

To power the headset off, press and hold the Multifunction button plus the Volume Down button for three seconds.

Once the COBALT **BLUE-HS** Headset and COBALT Adapter or cellular phone have been paired together, received signals will be heard over your COBALT **BLUE-HS** headset's earphone speaker. The volume of received calls can be adjusted using the Volume Up / Volume Down buttons on the headset or volume control on the two-way radio/phone.

When transmitting or on a phone call, the operator's voice is picked-up by the microphone in the COBALT **BLUE-HS** headset.

When used with a COBALT radio adapter, Push-to-Talk can be activated one of several different ways:

- By pressing and holding the Multifunction button on the side of the COBALT **BLUE-HS** Bluetooth Headset.
 - By pressing and holding the Talk button on the COBALT Adapter.
 - Using an optional wired PTT that is plugged into the COBALT Adapter.
 - Using an optional COBALT Wireless Bluetooth PTT (model BT-PTT, sold separately). Note that if you are using a COBALT BT-PTT, you will first need to pair the adapter with the PTT using the instructions located in the COBALT PTT User's Guide.
- When using the headset with a cellular phone, you can answer an incoming call or hang up a call by pressing the Multifunction button on the side of the COBALT **BLUE-HS** Headset.

STATUS LED MESSAGES

The meanings of the various status LED messages shown by the COBALT PTT are shown on the following table:

LED INDICATION	MEANING
Constant Red (while plugged into charger)	Charge mode
No indication (while plugged into charger)	Charging is finished
Flashes red-blue-red-blue repeatedly	Pairing mode
Two blue flashes every two seconds	Headset is powered on but not paired
Three blue flashes every two seconds	Headset is powered and paired
Constant red (while Multifunction is pressed)	PTT is active
Repeated red flashes	Battery is low
No indication	Device is powered off

7

PAIRING THE HEADSET WITH A CELLULAR TELEPHONE



The COBALT **BLUE-HS** Bluetooth Headset is capable of operation with a Bluetooth-enabled cellular phone.

STEP ONE: When pairing the Bluetooth Headset with a cellular phone, make sure that the headset and all other nearby Bluetooth devices are powered off before beginning. To turn the headset off hold the Multifunction Button + the Volume Down button for three to four seconds.

STEP TWO: Place the COBALT **BLUE-HS** Bluetooth headset into pairing mode. To do this, hold down the Multifunction Button on the headset for three to four seconds. Continue to hold the button down until you see the LED Indicator on the headset begin to quickly flash RED-BLUE-RED-BLUE in sequence. The PRYMEBLU Bluetooth headset is now in pairing mode.

STEP THREE: Activate the Bluetooth feature on your phone. Place the phone into pairing mode by selecting the "scan/discover new Bluetooth devices" option. The exact steps needed to do this will vary depending on the brand/model of phone you are using.

STEP FOUR: Select the COBALT **BLUE-HS** Bluetooth Headset from the list of Bluetooth devices shown on your phone. If the phone asks for a passcode, enter "0000". The phone may also prompt you to confirm the connection.

STEP FIVE: After a few seconds, the two devices should pair to one another. Once the COBALT Headset and phone are paired with each other, the status LED on the headset will show three blue flashes every two seconds.

DUAL PAIRING: Note that the COBALT **BLUE-HS** Bluetooth Headset supports pairing to only a single device at a time. You can use the headset with a cellular phone **OR** with a two-way radio adapter **BUT NOT BOTH AT THE SAME TIME.**

RECONNECTING TO A PREVIOUSLY PAIRED DEVICE

Once the COBALT **BLUE-HS** Bluetooth Headset and Radio Adapter or cellular phone have been successfully paired together, both devices will remember that connection. The adapter/phone and headset will attempt to reestablish their link whenever they are both powered on and in within range of each other. Re-establishing this connection can take 10-60 seconds.

6

SUPPORT AND WARRANTY

COBALT AV warrants this product against defects in materials or workmanship for a period of 90 days from the date of retail purchase. COBALT AV will repair or replace a defective unit, at our option, without charge for parts or labor. The limited warranty is extended only to the original purchaser and is valid only to consumers in the United States and Canada. It does not cover damage or failure caused by or attributable to Acts of God, abuse, misuse, improper or abnormal usage, faulty installation, improper maintenance, lightning, or other incidences of excessive voltage, or any tampering or repairs by other than a COBALT AV authorized repair facility. It does not cover replacement of consumable parts, transportation costs, or damage in transit.

Repair or replacement under the terms of this warranty does not extend the terms of this warranty. This warranty can only be modified by an officer of COBALT AV, and then only in writing. Should this product prove defective in workmanship or material, the consumer's sole remedies shall be such repair or replacement as provided by the terms of this warranty. Under no circumstances shall COBALT AV be liable for any loss or damage, direct, consequential, or incidental, arising out of the use of or inability to use this product. Some states do not allow limitations on how long an implied warranty lasts or the exclusions or limitations of incidental or consequential damages, so the above limitations or exclusions may not apply to you. This warranty gives you specific legal rights. You may also have other rights, which may vary, from state to state.

For support or warranty service on your COBALT AV product, contact us at 1-800-264-6021 for an RMA request.

COPYRIGHT AND TRADEMARK INFO

© 2014 ComtronICS | Cobalt AV, Lexington KY. All rights reserved.

COBALT AV and BLUE-HS are trademarks owned by ComtronICS | Cobalt AV. All other product or service names are the property of their respective owners.

DISCLAIMER: The Bluetooth wireless link used by COBALT products is an open standard, unsecured technology. As such, it is not recommended for first-responder or other mission critical users.

8