



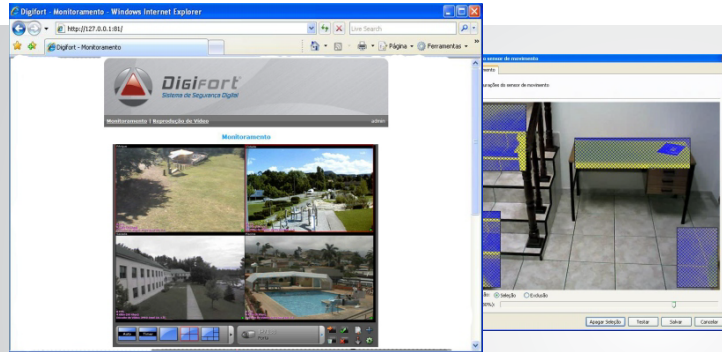
Digifort®
IP Surveillance System



Digifort Standard

Intermediate solution for installing up to 32 cameras

The Standard version provides the ideal resource for local and remote monitoring of up to 32 cameras per server and as the intermediate version of the Digifort System is ideal for small and medium-sized facilities, it brings together a solution for high reliability, excellent performance and low cost.



Digifort Standard allows the use of various models of IP cameras and video servers from different manufacturers, thus enabling the choice of hardware that best meets customer needs.

The **Standard** version provides a wide variety of tools for monitoring, playback, search and video recording, providing better management of hardware resources, security, administrative and operational facilities.

With **Digifort Standard** you will have a robust monitoring solution digital (IP) cameras with a wide variety of tools operations.

Software Features

Architecture

- Client / Server Architecture and Multi-Task
- Can be operated with analogue cameras simultaneously from IPs that are connected to the TCP / IP directly or through a Video Server.
- Supports 32 cameras and 01 board I / O Ethernet per server.
- Allows two or more processors sharing the tasks of the software to increase performance.
- Supports various models of IP cameras and video servers.
- Allows remote access, unlimited connections per server.
- Allows viewing of cameras from different servers on the same screen.
- You can use any image resolution (1280x1024 Just above), if the camera supports.
- Has Streaming Multi system, which allows live monitoring of the recording with different configurations.
- Allows storage and transmission of images in MJPEG and MPEG4, WAVELET, H.263 and H.264.
- Allows simultaneous operations such as recording, playback and export video, system configuration, live monitoring, query events, image search server monitoring and various other tasks.
- Allows mapping network drive
- Has a license to use limit of 4 hours or 30 days for demonstrations.
- Has compatibility with Unicode.
- Compatibility with protocol ONVIF the camera (video only).

Recording

- Supports continuous recording, motion detection and event.
- Supports speed recording and live viewing of up to 30 fps per camera (Since the camera supports this rate fps).
- Supports the recording of 32 cameras per server (where this limit cameras should be in accordance with the disk capacity and processing server).
- Has broadcast and recording schedule by date and time.
- Motion sensor enables control of areas sensitive to motion.
- Has buffer pre and post alarm for up to 10 seconds of video.
- Has management system and advanced automatic disk.
- Has a system digital certificate for authentication of recorded images

User Control

- Support for 08 user accounts.
- It has strict control of rights and different password for each user or group.
- Have groups of users that lets you assign the same permission settings for all users within that group.
- It has controls such as locking and expiration date of user account.
- Features login security by IP and scheduled times.
- Has a system user's profile, anywhere where the user will have to connect it to your profile.
- Allows locking the workstation.

Control Alarms and Events

- Facilitates the integration of alarms via the I / O of the cameras and I / O Ethernet module
- Provides scheduling for control signal input from the cameras.
- Triggers external alarms on the occurrence of events.
- Has control of miscommunication.
- Has control of write failure.
- Has alarm by motion detection.
- Sends alerts (via e-mail, SMS, pop and sounds) in the occurrence of events.
- Allows alarm event Client Monitoring can be directed only to users or groups of users.
- Sends alerts (via e-mail, SMS, pop and sounds) in the occurrence of events.
- Positions mobile cameras in certain presets in the occurrence of any event.
- Triggers external alarms on the occurrence of events.
- The shares are set independently for each camera, with the possibility of scheduling these actions.

Logs

- Has access to the server log.
- Has logging user actions.
- Has the event log.

Web Server and Web Client

- Has built-in web server for access through Internet Explorer.
- Allows viewing of live images through ActiveX Client (Monitoring).
- Allows viewing of recording images via standard Digifort Player.
- Allows control of PTZ via Joystick Visual.
- Provides emergency local recording by web browser.
- Allows you to enable events through the synoptic map (On a lamp, a fire siren, etc.).
- Provides information to configure the camera as image resolution, frames per second "FPS", and Baud Rate Decoder.
- Allows viewing and activation of Motion Detection live via the Web browser.
- Has double-click an image to select it and maximize it.
- Allows viewing of cameras via web browser using previously created mosaics.

Access via Mobile Device

- Includes viewing of images via cell phone or any mobile device compatible with Java 2 ME (Java CLDC 1.1 / MIDP-2.0), Android, Iphone and Ipad.
- Allows you to connect to multiple servers.
- Has view cameras individually.
- Allows saving Screenshot (Photo) image in the Mobile Device.
- Allows viewing of the image in full screen.
- Allows control of PTZ.
- Supports preset.
- Allows display setting for resolution, image quality and Frames Per Second (FPS)
- Has status of bandwidth consumed in Kbytes.
- Allows you to activate alarms (On a lamp or a fire siren, closing a gate, etc.).
- Available in Portuguese, English and Spanish.



Control of Mobile Cameras

- Supports PTZ control simple.
- Supports simultaneous control Pan Tilt, click through the image.
- Supports PTZ control by Joystick Visual.
- Supports PTZ control by Joystick and Mouse USB (Pan, tilt, focus, zoom, etc)
- Supports up to 16 presets per camera.

Video Monitoring and Playback

- Allows you to search for images by camera, by date and time with outputting video, at speeds configurable in normal or reverse direction, by the time bar, allowing to select a video track.
- Has the timeline of recorded images which show the points where there are recordings and / or movement, and allows the selection of time through the timeline.
- Allows playback and export of 4 cameras simultaneously and synchronized in predefined tiles.
- Allows the creation of mosaics in public Client Monitoring
- Advanced Search by motion detection.
- Has motion detection tool live.
- Has recording tool local emergency.
- Provides privacy masking tool for fixed cameras.
- It supports DirectX for better quality live video.
- Digital Zoom Allows live and recorded images from different areas of the screen ..
- Has screenshot tool.
- Has automated mosaic, adjusting the aspect ratio automatically depending on the number of cameras.
- Support privacy mode to prevent viewing of cameras monitoring the client.
- Allows sequencing cameras and mosaics.
- Support the creation of custom styles of mosaic (Up to 2 styles).
- Has a filter for deinterlacing video.
- Has a filter searches for objects in Client Monitoring.
- Allows the inclusion of property identification.
- De-interlace filter in video playback
- Export videos into AVI format and Digifort native format.
- Allows you to save a JPG image in the video playback.
- You can print an image on the video playback allowing to describe the fact.
- Support the creation of maps (2 maps)
- Supports up to two monitors per workstation.
- Allows the double-click an object is selected and maximized (full screen) on the client monitoring.

Administration

- Has calculator for sizing disk space.
- Allows you to apply global settings in a set of cameras and users.
- Allows real-time configuration of the system.
- Includes graphics server information.
- Work with the licensing system with cameras, allowing the expansion of the system with additional licenses.
- Supports the following operating systems: Windows XP, Windows Vista, Windows Server 2003, Windows Server 2008, 7 or higher.

Integration with Digifort

Digifort allows integration with other systems, providing their APIs (HTTP and ActiveX API). Example of systems integration:

- ♦ Access Control Systems;
- ♦ Biometric systems;
- ♦ Automation Systems;
- ♦ Alarm system;
- ♦ Control Systems;
- ♦ Business Automation;
- ♦ Project management;
- ♦ ERP Systems;
- ♦ etc;

ActiveX (OCX):

- Integration with other systems to get live video from any camera.
- Integration with other systems to get recordings from any camera.
- Allows other systems through the purchase Digifort control PTZ (Pan, Tilt, Zoom, optical) and digital zoom.
- Integration with other systems to search for "media profiles" of Digifort (Record and Display).
- Integration with other systems to export recordings.
- Etc.

HTTP API:

- Allows other systems through the Digifort, check the status of I / O ports of cameras / video servers.
- Allows other systems through the Digifort, check the status of I / O ports of warning devices.
- Allows other systems through the Digifort, trigger alarm outputs of cameras / video servers.
- Allows other systems through the Digifort, trigger alarm outputs for alarm devices.
- Allows Digifort integrated with other systems to gain control of PTZ cameras.
- Allows other systems get the "List of cameras."
- Allows other systems get the "List of alarm devices."
- Allows other systems through the Digifort, work with global events (Trigger and receive a list of events).
- Etc.

Analytical systems *

- Includes video analysis to identify cars parked on the shoulder.
- Includes video analysis to identify cars, people or animals traveling in the opposite direction avenues of the streets or highways.
- Includes video analysis to identify bottlenecks.
- Has count people, vehicles or objects.
- Allows you to send an alarm if the camera (fixed) is obstructed, displaced from their place or they are at variance sudden brightness.
- Allows you to activate an alarm if there is movement in prohibited areas
- Allows you to define virtual areas and zones.
- Allows you to identify objects removed or abandoned in a particular location.
- Allows you to define virtual barriers (vertical, horizontal and diagonal).
- Has a system for recognizing license plates, and sends it to a database in text format.

*Modules sold separately



CALL 1.800.624.6021 or 859.299.9494 x1

www.cobaltav.com